

## NC ACCESSIBILITY CODE

2009 NC Bldg Code Ch. 11

2003 ICC/ANSI A117.1

**Effective date:** 1 Jan 2010

**REMEMBER:** Until the 2004 ADA/ABA is adopted by the US Dept of Justice, designers have to comply with the more restrictive of the following codes:

- 2009 NCBC with 2003 ANSI A117.1
- ADA Standards (or you can use the 2004 NCAC while being certified as being equivalent on Nov. 28, 2005)

## SIGN UP FOR THE E-MAIL DISTRIBUTION LIST AT:

[www.ncdoi.com/OSFM/Engineering/CodeServices/engineering\\_codeservices\\_interpretations\\_accessibility.asp](http://www.ncdoi.com/OSFM/Engineering/CodeServices/engineering_codeservices_interpretations_accessibility.asp)

See E-mail Updates at top of page.

## Changes from 2004 NCAC

A-604.5.1 Side Grab Bars 2

Self-Clsng Stall Dr Reqmt 2



## New NC Accessibility Code

On August 11, 2009 when the NC state legislature left town, NC began the next phase of accessibility enforcement, moving on to the 2009 NC Bldg Code Ch. 11 and 2003 ANSI A117.1.

For a short period of time until Dec. 31, 2009, the NC Bldg Code Council allowed designers and contractors to have a choice of using either the 2004 NC Accessibility Code or the 2009 NCBC Ch. 11, which references the ANSI A117.1 standard in NCBC 1101.2.

Now that the New Year has come, NC has turned over a new leaf: **all projects receiving a permit on or after January 1, 2010 are required to use the 2009 NC Bldg Code Chapter 11 for accessibility along with the referenced standard - 2003 ICC/ANSI A117.1**

**Q:** Should I buy the Code or the Commentary?

**A:** The recommendation is to purchase the Commentary for the following reasons: 1) More

illustrations, 2) Several examples, and 3) Commentary that is not available otherwise.

**Q:** Where do I go to order the Commentary?

**A:** If you go to the Access Update website at : [www.ncdoi.com/OSFM/Engineering/CodeServices/engineering\\_codeservices\\_interpretations\\_accessibility.asp](http://www.ncdoi.com/OSFM/Engineering/CodeServices/engineering_codeservices_interpretations_accessibility.asp)

there is a pdf file under **TECH DATA** that will help you get to the right location to order one.

## How the New Requirements Work

**Scoping.** The main thing to remember is that the **scoping requirements** for accessibility are in the 2009 Building Code itself. The how-to-do **technical requirements** are in ANSI.

### Scoping Requirements:

- Ch. 10 - Egress
- Ch. 11 - Access and general scoping for other items
- Ch. 3409 - Alterations + Change of use
- 3409.4 - Change of Occupancy
- 3409.7 - Alterations + Disproportionality

- 3409.9 - Alterations for Historic Buildings
- App. E - Supp. Access. Reqmts.

It is important to note that Appendix E is adopted as part of the code and are required. While not long, the App. E Sections include:

- E104 - Special Occupancies [Transient lodging; I-3]
- E1025 - Portable Toilets, Laundry Eqmt, Vending Machines, Mail Boxes, ATMs, 2-way Communication Systems

- E106 - Telephones
- E107 - Signage
- E108 - Bus Stops
- E109 - Transp. Fac. + Stations
- E110 - Airports
- E111 - Referenced Standards

The 2009 NC Rehab Code references the 2009 NCBC and the 2003 ANSI A117.1.

These requirements may be in addition to the requirements in the main body of the code. Be sure to double-check them and not overlook them just because they are in App. E.



*"Don't let this escape your attention or you may have to tear down the dry wall (+ tile) to install additional blocking to support them. It's an expensive lesson to learn"*

## ANSI 604.5.1 Fixed Side Wall Grab Bars

### 3 Grab Bars:

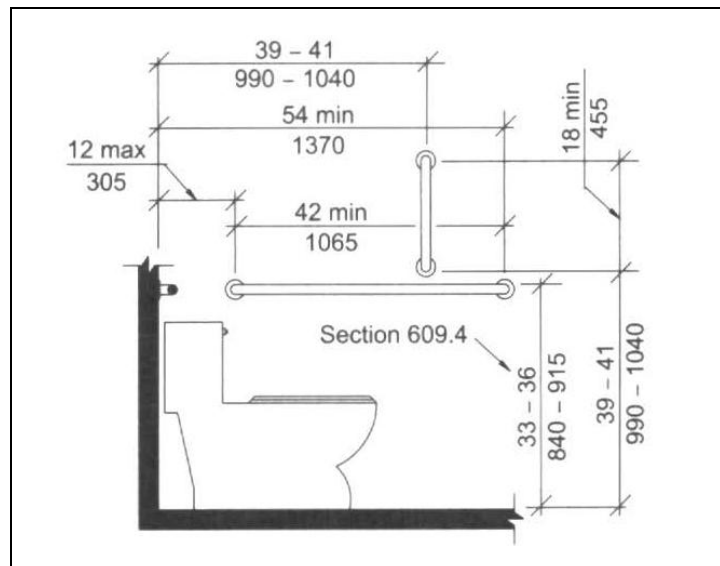
- 2 side
  - 1 horizontal
  - 1 vertical
- 1 rear

### Requirements:

- Side Horizontal Grab Bar
  - 12" max from rear - 54" min
- Side Vertical Grab Bar
  - 18" min in length
  - Bottom of bar: 39-41" AFF
  - Center line of bar between 39 + 41" from rear wall
- Rear Grab Bar
  - See ANSI 604.5.2

### EXCEPTIONS:

1. In Type A + Type B dwelling units, not required.
2. In Type B unit, when side wall not available for a 42" grab bar, the side wall grab bar shall be permitted to be:
  - a. 18 inches min. in length
  - b. Located 12" max. from rear wall, and
  - c. Extending 30" min. from rear



**ANSI  
604.8.3  
+  
604.9.3**

## Self-Closing Doors Required for H/C Stalls

There are multiple types of accessible restrooms or stalls:

- 603 /4 - Individual toilet rooms
- 604.8 - Wheelchair accessible stalls
- 604.9 - Ambulatory accessible compartments

A self-closing door is not required for individual toilet rooms.

**The stall type of restrooms require that the door be self-closing** so that the user need not have to reach back over the walker, crutches, wheelchair or other mobility device to close to door. The ANSI references are:

- **604.8.3** – Wheelchair accessible stalls
- **604.9.3** – Ambulatory accessible stalls